

Unlock Huawei E220 modem

Unlock

2009



This document gives idea about how to unlock Huawei E220 modem

Unlock Huawei HSDPA E220 Modem

- First download the Following software's:

E220 firmware updates

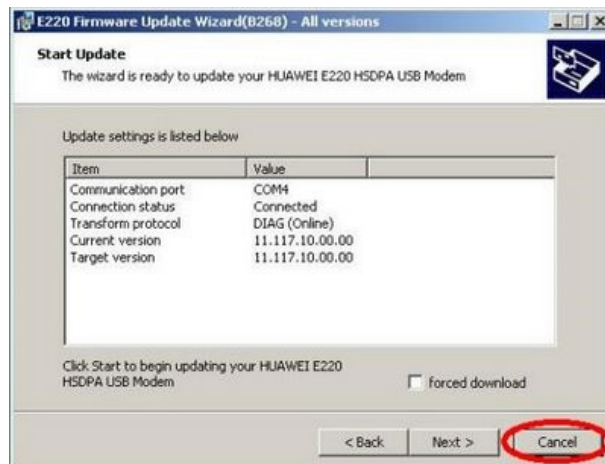
A Hex Editor like XVI32

QMAT - QC Mobile Analysis Tool

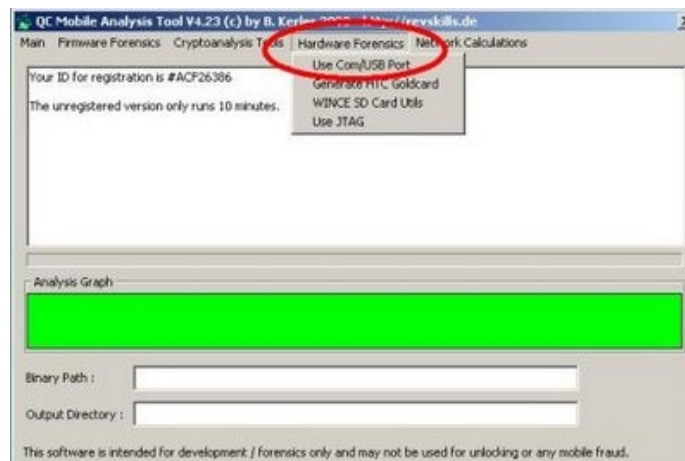
e220 CardLock UnLocker

You can find it on Google search

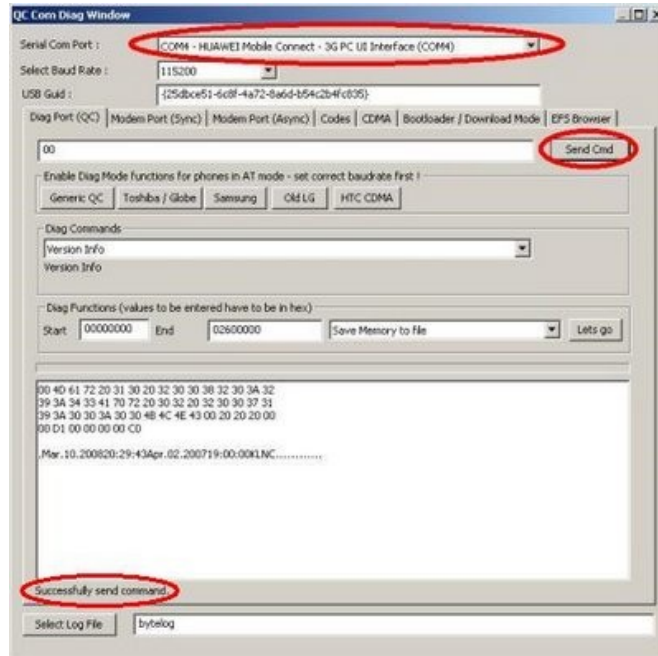
- Disconnect modem from internet and close the mobile partner application. Then run the E220 firmware updates wait till it detects the modem and then cancel it.



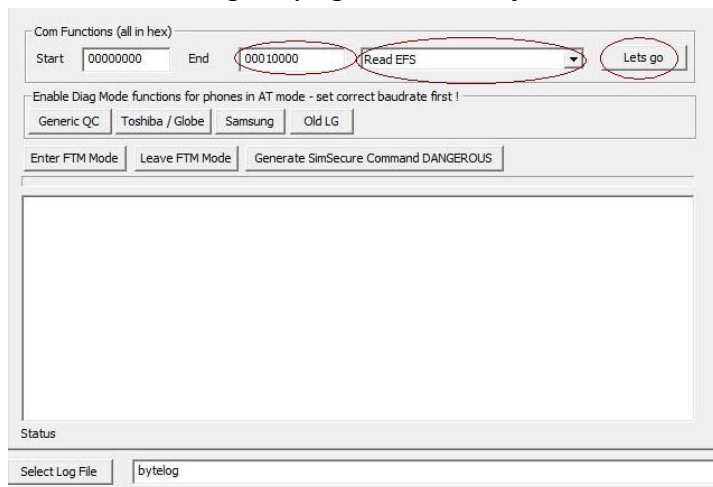
- Run the QMAT - QC Mobile Analysis Tool, Go to **Hardware Forensics** Menu and choose the **Use Com/UBS port**.



- You can see **serial com port** option selected the **COMx - HUAWEI Connect - 3G PC UI Interface (COMx)** .if not select it from option menu.
- Then click the SendCMD button wait till the message "**Successfully sent command**" appears on the bottom right



- Now Select "Read EFS" from the drop down menu and set **End** value to the **00010000** and Click the "Lets go" button. When it asks, enter the file name **e220.bin** and save it. A message saying "**Successfully read EFS**" should appear.



- Then open the Hex Editor and open the **e220.bin** file and search the Hex Value **53 64 2c 00**, next to that value there is 8 digit long number.

